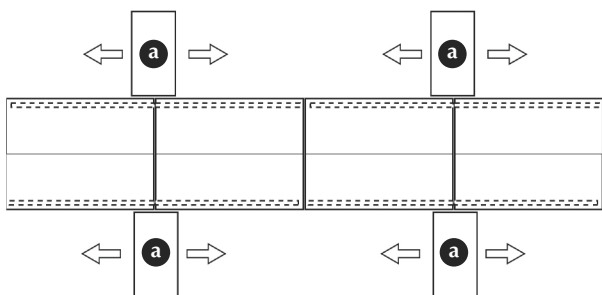


**FEATURES AND BENEFITS**

- Steel troughs support integrated, shielded four-circuit power delivery.
- Dual side shelves for managing excess equipment cable or simple extension cords.
- Built for easy installation in any work environment.
- Bridges can easily be recycled at the end of its life cycle.

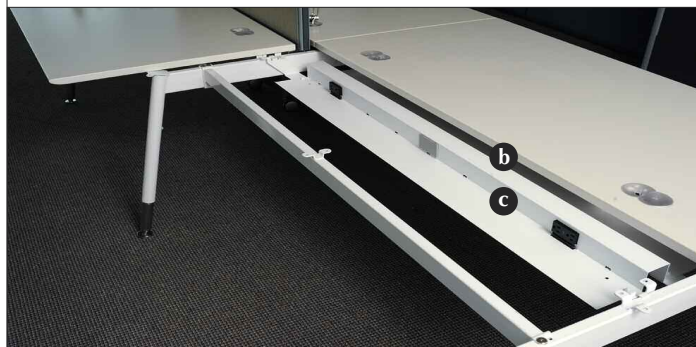
For further information, please refer to the 2009 Boulevard Price List, Viceversa Bridges Section (pg. M37 & M38).

**BRIDGES SLIDING RETURN**



- a** A perpendicular return table slides along a rail secured to the main table unit. The 72" rail **allows free movement** of the Sliding Return.

**BRIDGES POWER TROUGH**



- b** Provides power distribution and data cable management for back-to-back configurations.
- c** Cables can be neatly organized and captured by lay-in troughs, suspending data and electrical cable bundles between workstations.